

**Model Number:** 8000-291-250

**Pump:**

Positive Displacement 3 Chambers Diaphragm Pump

Upper Housing with 3/8"-18 NPT Female Ports

Bypass: 50PSI

Pressure Switch: None

2.0° Cam, Solid Diaphragm

Check Valve: Yes

**Performances:**

Open Flow: 2.5L/min (0.6GPM) +/- 10% at 24VDC

Maximum Inlet Pressure: 30 PSI

Run Dry: Yes

**Material of construction:**

Plastics (upper housing, valve housing): Polypropylene

Valves: EPDM

Diaphragm: Santoprene

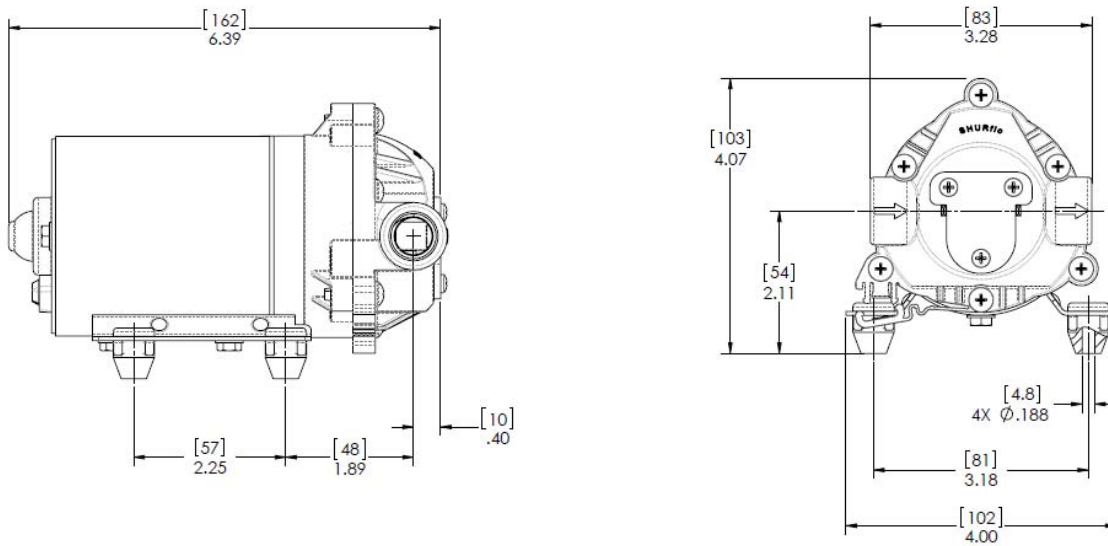
**Electrical:**

24VDC Nominal

Permanent Magnet Brush Motor

Motor Leads 16 AWG Wires

Duty cycle: Intermittent

**DIMENSIONS:**
*Nominal dimensions shown in mm.*


Specifications subject to change without notice  
 All data based on testing with water at ambient temperature

**PENTAIR WATER BELGIUM bvba**

Industriepark Wolfstee, Toekomstlaan 30, B-2200 Herentals, Belgium  
 TEL: +32-14-283 500 FAX: +32-14-283 505 email: shurflo@pentair.com